



Security Commander CCTV Interface Guide

Copyright	© 2015 UTC Fire & Security. All rights reserved.
Trademarks and patents	<p>The Security Commander name and logo are trademarks of UTC Fire & Security.</p> <p>Other trade names used in this document may be trademarks or registered trademarks of the manufacturers or vendors of the respective products.</p>
Manufacturer	<p>UTC Fire & Security Australia Pty Ltd t/a Interlogix A UTC Building & Industrial Systems company Level 1, 271–273 Wellington Road, Mulgrave, VIC, 3170, Australia</p>
Contact information	For contact information, see www.interlogix.com.au .

Content

Important information.....	ii
Purpose.....	ii
Who should read this manual.....	ii
Related documentation	ii
Typographical conventions	iii
Overview of Security Commander DVR	1
DVR integration process	3
Before you begin	3
Setting up DVR integration	4
Installing VSM	4
Installing VSM plug-in modules.....	4
Setting up video clients.....	5
Installing VPC	5
Installing VPC plug-in modules	5
Checking the VPC connection	6
Using the Video Console.....	7
Using the Navigation panel	9
Using the View panel	10
Exporting footage and saving snapshots	11
Searching for tagged DVR footage	11
Configuring Security Commander.....	14
Setup outline	14
Creating operator records and setting permissions.....	15
Creating Digital Video Device records	16
Configuring cameras.....	17
Creating camera presets.....	18
Mapping video footage to alarms and events.....	19
Optional: Creating alarm graphics.....	20
Monitoring badge activity	21
Monitoring alarm activity	21
Viewing alarm graphics	21

Important information

Security Commander provides a user interface for event-triggered video — a way to associate pre-set cameras, door/reader transactions, and alarm transactions with video display via the Security Commander user interface. Event-triggered video recording enables you to access live and recorded video and initiate camera control at any workstation within a Security Commander system.

Purpose

This manual provides instructions for setup and operation of the integrated digital video surveillance option for Security Commander.

Who should read this manual

This manual is intended for:

- Installation technicians
- System administrators who are responsible for the planning and implementation of the system design, and who perform system configuration and setup using Security Commander forms that are accessible only to the master-level operator.
- System operators, using Security Commander forms and windows accessible through the graphical user interface (GUI)

The material in this manual has been prepared for persons responsible for, and familiar with, the security needs of the customer facility.

Related documentation

For more information, refer to the following:

- *Security Commander Help*: Provides reference information, such as screen and field descriptions, along with instructions for system administrator duties, such as configuring Challenger panels.
- *Security Commander Installation Manual*: Provides information for Integration Technicians to set up, install, and configure a Security Commander system.
- *Security Commander Administration Manual and Operation Guide*: Provides information for both the system administrator and the operator to program, configure, and use the Security Commander system.
- *Security Commander API Manual*: Security Commander API (Application-Program Interface) provides the ability to import data from external applications such as a Human Resource Management System.
- *Security Commander Photo ID User Guide*: Provides instructions for users of the optional Photo ID package.

Typographical conventions

This manual uses certain notational and typographical conventions to make it easier for you to identify important information.

Table 1. Notational and typographical conventions

Item	Description
Command sequences	Where appropriate, command sequences are abbreviated with the ">" symbol. For example, the command "Click Start, and then click Run" is written as "Click Start > Run".
Command alternatives	Many commands can be executed in a variety of ways including menu bar, tool bar, shortcut keys, right click, or double click. In general, commands are described from their menu bar location only, even when alternatives exist.
Keys	Capitalized, for example "press Enter".
Keystrokes	Text that you type is indicated in Courier New font. For example, "Type <code>dcomcnfg</code> ".
Expanding a "tree" view	The word "expand" is used to indicate that selections may be hidden. For example, the command "Click the + box next to Computers" is written as "Expand Computers".
Notes	Notes alert you to information that can save you time and effort.
Cautions	Cautions are displayed to advise the user that failure to take or avoid a specified action could result in loss of data.

Overview of Security Commander DVR

The Security Commander digital video surveillance option (DVR) is integrated into the Security Commander system and requires its own hardware and software.

The Security Commander integrated digital video system provides the capability to automatically control CCTV cameras and monitor activities when Security Commander alarms or readers change state. In order to monitor the alarms and readers, the desired Security Commander activities must be mapped (linked) to the appropriate cameras set up in Security Commander. An alarm is cleared and responded to by the operator from the Security Commander Alarm Monitor form or when the Security Commander alarm resets.

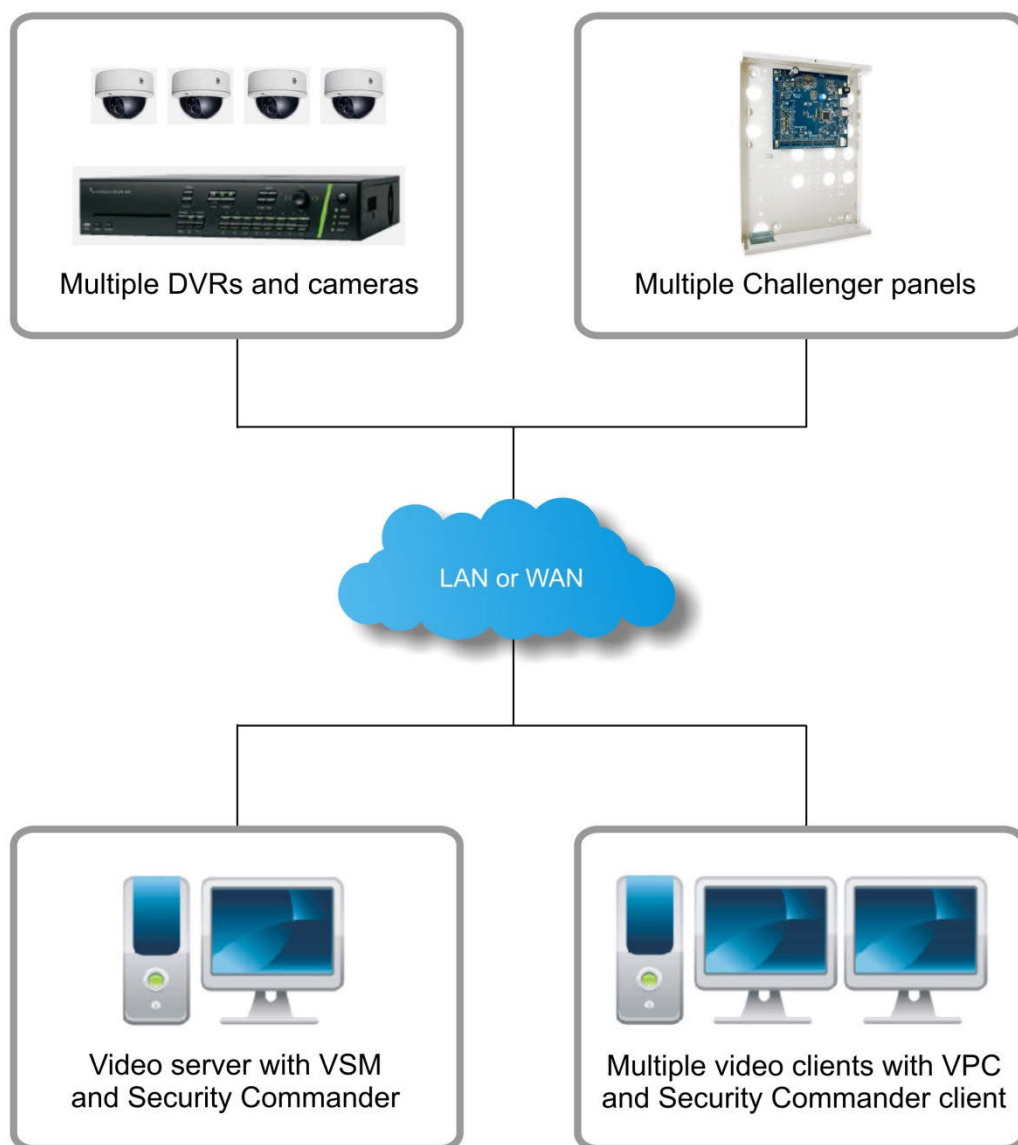
Security Commander interfaces with CCTV (Closed Circuit Television) systems via video service applications. "Video service" refers to the use of plug-in modules to support CCTV equipment from various manufacturers. Live and recorded video is displayed on a Video Console application. See "Using the Video Console" on page 7 for details about using Security Commander DVR.

Security Commander 2.1 (and later) DVR integration uses the following add-on video service applications (each with a corresponding brand-specific video plug-in module) to provide the interface between Security Commander and digital video devices.

- Video Status Manager (VSM) and the brand-specific VSM plug-in module, must be installed on the Security Commander server computer (one computer must have VSM).
- Video Presentation Client (VPC) and the brand-specific VPC plug-in module must be installed on each Security Commander computer that is used for controlling or viewing video. The VSM and VPC can be installed on the same computer.

Refer to Figure 1 on page 2 for an illustration of a Security Commander system with separate computers used as the video server (VSM) and video clients (VPC).

Figure 1: Overview of DVR integration



DVR integration process

This section describes the process of integrating DVRs and cameras into a Security Commander system.

Refer to *Security Commander Help* for details about programming DVRs, cameras, and presets. The information provided in this section is only a summary.

Before you begin

In order to use DVR functionality you need the following:

- The Security Commander system must be licensed for DVR integration.
- Microsoft .NET Framework 4 must be installed on any computer where video service applications are used. Microsoft .NET Framework 4 is available from Microsoft at www.microsoft.com.
- Brand-specific plug-in modules may have other specific requirements. Refer to the plug-in module's datasheet for details.
- DVRs must have correct firmware. Check the manufacturer's web site for updates.

Refer to the applicable DVR datasheets for workstation hardware requirements.

Setting up DVR integration

One Security Commander computer in the system must be the video server.

Installing VSM

Install VSM on a computer that has Microsoft .NET Framework 4 installed.

Note: If VSM has been previously installed on this computer, then remove it before reinstalling.

To install VSM:

1. Browse to the CD's Installation folder and run "VSMinstall.exe". The "Welcome to the Video Status Manager Service Setup Wizard" displays. Click Next to continue.
2. VSM port number 9300 is selected by default. Click Next to continue.
3. Accept the suggested installation folder, and then click Next to continue. Alternatively, click Browse to select a different location before clicking Next.
4. When the "Installation Complete" message displays, click Close.

To edit the details after installation, click Start > All Programs > Video Status Manager Configuration.

Installing VSM plug-in modules

Visit our website at <http://interlogix.com.au> for brand-specific plug-ins and installation instructions.

Setting up video clients

Each Security Commander computer that is used for controlling or viewing video must have VPC installed.

Note: Video client computers must have User Account Control set to “never notify”. To verify or change the User Account Control settings go to Control Panel > System and Security > Action Center.

If you intend to install both VSM and VPC on the same computer, then follow the instructions in “Setting up DVR integration” on page 4 before you proceed.

Installing VPC

Install VPC on each Security Commander computer where video is required. Each computer must have Microsoft .NET Framework 4 installed.

Note: If VPC has been previously installed on this computer, then remove it before reinstalling.

To install VPC:

1. Browse to the CD's Installation folder and run “VPCinstall.exe”. The “Welcome to the Video Presentation Client Setup Wizard” displays. Click Next to continue.
2. VPC port number 9200 is selected by default. Do not use the same port number as the server.
3. The Video Status Manager Server “localhost” is selected by default. If the VSM is on a different computer then enter the video server's IP address.
4. Accept the suggested installation folder, and then click Next to continue. Alternatively, click Browse to select a different location before clicking Next.
5. At the Confirm Installation screen, click Next to continue.
6. When finished, an “Installation Complete” message displays.
7. Click Close.

To edit the details after installation, click Start > All Programs > Video Presentation Client Configuration.

Installing VPC plug-in modules

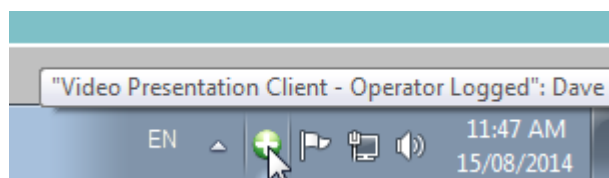
Visit our website at <http://interlogix.com.au> for brand-specific plug-ins and installation instructions.

Checking the VPC connection

Any time the client is started, VPC starts and attempts to connect with Security Commander. The VPC icon in the Windows taskbar (Figure 2 below) can display three states:

- A red icon with an x indicates that VPC cannot connect with Security Commander.
- A blue icon with a – indicates that VPC is connected with Security Commander, but there is no Security Commander operator logged in.
- A green icon with a + indicates that VPC is connected with Security Commander, and there is a Security Commander operator logged in.

Figure 2: Video Presentation Client icon



Notes

- At least one DVR must be enabled before the video service can connect to the video server.
- The taskbar must display a blue or green icon with a + before you can connect to DVRs or cameras.

Using the Video Console

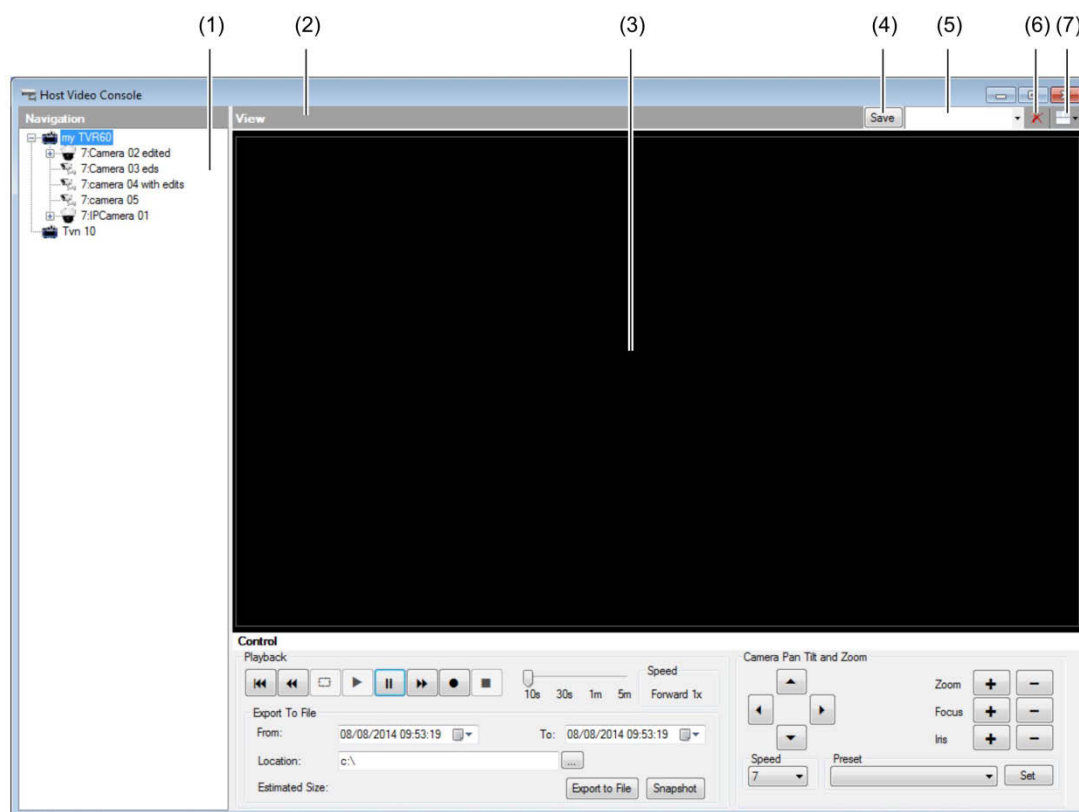
From the Operation menu, select Video Console to open the Video Console to display and control DVRs and video cameras connected to Security Commander via a video service.

In addition to the Operation > Video Console option, the Video Console can be launched in the following ways:

- Click the Video Console toolbar button.
- Press the keyboard shortcut Alt+F9
- Automatically, in response to events.
- From the Operations > Search DVR Footage command to find tagged video footage in the history or archive databases. See “Searching for tagged DVR footage” on page 11.
- Right-click a camera icon in an alarm graphic map, and then select “View live video”.
- Right-click a badge event in the badge monitor, and then select “View live video” or “View recorded video”.
- Double-click a view in Video Console to launch a new instance of Video Console showing only that view.

The Video Console has a Navigation panel on the left that lists all enabled DVRs and their cameras. Refer to Figure 3 on page 8 and to Figure 4 on page 9.

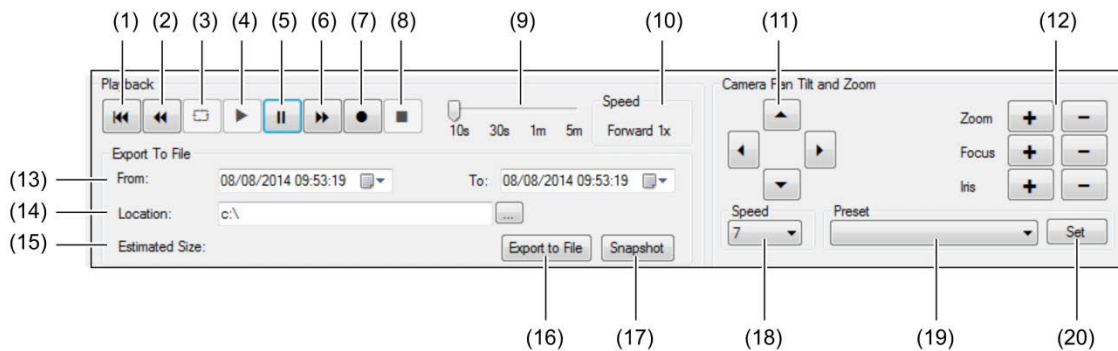
Figure 3: Video Console (initial view)



- | | |
|--|-------------------------------|
| (1) Navigation panel | (4) Tile layout Save button |
| (2) View panel title bar (double-click to toggle full-screen view and normal view) | (5) Tile layout name field |
| (3) View panel | (6) Delete tile layout button |
| | (7) Tile layout selection |

Refer to Figure 4 on page 9 for details of the lower portion of the Video Console.

Figure 4: Video Console (control details)



- | | |
|---|---|
| (1) Jump back by 10 s, 30 s, 1 m, or 5 m, as set by the jump back interval slider * | (11) Pan and tilt controls |
| (2) Rewind (if supported by the DVR) * | (12) Zoom, focus, iris controls |
| (3) Restart recorded video * | (13) Footage export date and time selections |
| (4) Play (if paused) | (14) File export destination (click ... to change location) |
| (5) Pause | (15) Footage export estimated size |
| (6) Play forward (click again to increase speed) * | (16) Footage export to file button |
| (7) Record (to computer) | (17) Snapshot (single image) button |
| (8) Stop recording (to computer) | (18) Speed selector for pan and tilt controls |
| (9) Jump back interval slider * | (19) Preset selection list |
| (10) Play forward speed indicator * | (20) Save changes to selected preset |

* **Note:** Applicable only to recorded footage

Using the Navigation panel

The Navigation panel (Figure 3 on page 8, item 1) allows you to select cameras and presets from a list of DVRs.

The navigation panel lists DVRs, cameras, and (where applicable), preset views. Hidden items are indicated by a + box.

- Click the + box to expand the list (the + box changes to a – box).
- Click the – box to collapse the list.

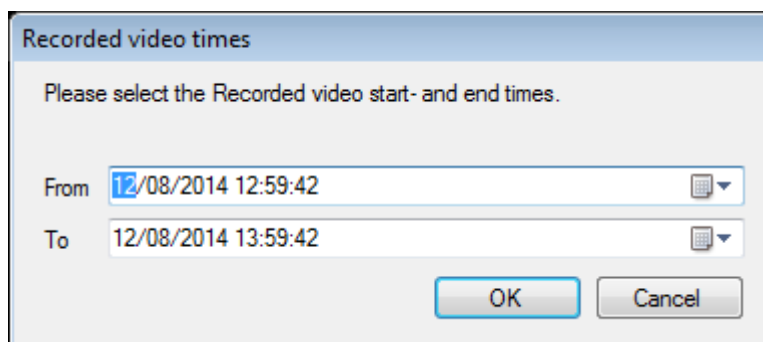
Alternatively, double-click items to expand or collapse their lists.

Drag cameras or presets from the Navigation panel onto tiles to display the current live view (or the preset live view).

Cameras listed in the Navigation panel have the following right-click shortcuts:

- Show Live Video—displays the current live view in an empty tile.
- Show Recorded Video—displays Recorded video times dialogue (Figure 5 on page 10), from which you can specify the start and end dates and times to display the recorded footage.

Figure 5: Recorded video times dialogue

A screenshot of a 'Recorded video times' dialog box. The title bar is blue with the text 'Recorded video times'. The main area is light gray and contains the instruction 'Please select the Recorded video start- and end times.' Below this, there are two input fields. The 'From' field contains the text '12/08/2014 12:59:42' and has a small calendar icon to its right. The 'To' field contains the text '12/08/2014 13:59:42' and also has a small calendar icon to its right. At the bottom right of the dialog box are two buttons: 'OK' and 'Cancel'.

Note: When you reach the end of the recorded video selection, or if there is no recorded footage at the selected the start and end dates and times, then the current live view is displayed.

Using the View panel

The View panel (Figure 3 on page 8, item 3) can display footage from up to 16 cameras via pre-defined tile layouts containing 1, 2, 4, 9 or 16 views. Specific arrangements of cameras and layouts can be saved for reuse.

The view panel has two types of double-click commands:

- Double-click the View panel title bar (Figure 3 on page 8, item 2) to toggle between full-screen view and normal view.
- When a live or recorded view is displayed in the View panel, you can double-click a view (Figure 3 on page 8, item 3) to open a new instance of Video Console displaying only the view you double-clicked. Take care to close the new instance when you no longer need it to avoid having many instances of Video Console open simultaneously.

To select a tile layout:

1. Click the Tile Layout arrow (Figure 3 on page 8, item 7).
2. Click the required layout of 1, 2, 4, 9 or 16 tiles.
3. Drag cameras or presets from the Navigation panel onto tiles to display the current live view.

To save the current tile layout (populated with camera views):

1. Type a name in the Tile layout name field (Figure 3 on page 8, item 5).
2. Click Save (item 4).

After saving a populated tile layout, you can later click the Tile layout name arrow, and then select the saved tile layout from the list.

To delete a saved tile layout, select the layout and then click Delete tile layout button (item 6).

Advanced control options

Subject to plug-in support, when live footage from PTZ cameras is displayed, you can click and hold the mouse button over the image stream and move the camera as if using a joystick. Different PTZ operations such as zoom can be performed with different mouse buttons.

Substream video selection

Subject to plug-in support, when live footage is displayed, you can right-click an image stream, and then click the “Is Substream video” option to display a low-bandwidth stream from the DVR.

Exporting footage and saving snapshots

Video Console has controls shown in Figure 4 on page 9 by which you can save video files or still images to your computer.

The Record button (item 7) allows you to save an exported file to your designated location.

The Snapshot button (item 17) saves a .bmp format file to your designated location.

Searching for tagged DVR footage

From the Operations menu select Search DVR Footage to search history or archive databases for tagged video footage, and display the footage via the Video Console.

Note: Depending on the date range that you need to search and the archive database settings on the Parameters form, you may need to use the archive database instead of the default Security Commander history. The default archive database setting is daily.

Figure 6: Search DVR Footage window

Search DVR Footage

Event Sources

Readers

Alarms

History

Archive

Search Range

☐

Start Date/Time 26/08/2014 10:23:49 AM Calendar...

End Date/Time 26/08/2014 10:23:49 AM Calendar...

Clear Search

SEQ	Event Tag	Camera Description	DV Device Description	Date & Time

You can select to search for only alarm events or reader events:

- Click the Readers button to assign individual readers. The search will be limited to tagged events from those readers.
- Click the Alarms button to assign individual alarms. The search will be limited to tagged events from those alarms.

Only readers and alarms that were assigned to event triggers using the Event Trigger Form will be displayed.

Select the Search Range check box to define a range of dates and times to search the selected database:

- Start Date/Time. If the displayed value isn't correct, then click "Calendar..." to select a new data and time from the calendar widget.
- End Date/Time. If the displayed value isn't correct, then click "Calendar..." to select a new data and time from the calendar widget.

Click Search to execute the search.

The results of the search are listed in the window. The list contains recorded video event tags based on the date and time and/or event source criteria specified. The list is divided into columns labelled: SEQ, Event Tag, Camera Description, DV Device Description, and Date & Time.

Select the desired event tag and right-click to play the recorded video event in the Video Console.

Depending on the video system, playback of individual recorded video events may be limited to a single user per DVR. If you are unable to access a recorded video event, it may be that the recorded video on the same DVR is presently being accessed or the recorded video event has been overwritten and is no longer present in the DVR.

Click Clear to reset the form.

Configuring Security Commander

Setup outline

Table 2 below outlines the steps to set up a DVR system on a Security Commander computer after installing the necessary VSM, VPC, and plug-ins.

Table 2: Steps to configure and operate a Security Commander Digital Video System

Task	Menu > Form	Information Source
1. Set up and program digital video devices (repeat this step for each DVR)	—	Refer to your product documentation.
2. Configure digital video recorder system		This section.
a. Set up operators and permissions	Administration > Permissions	<i>Security Commander Administration Manual and Operation Guide</i>
b. Configure the digital video recorder (DVR)	Device > CCTV > Digital Video Device	Refer to your product documentation.
c. Create Preset records	Administration > Camera Preset	“Creating camera presets” on page 18
d. Configure the cameras	Device > CCTV > Camera	“Configuring cameras” on page 17.
e. Set up event triggers	Administration > Event Trigger	“Mapping video footage to alarms and events” on page 19
f. OPTIONAL: Set up alarm graphics	Operations > Alarm Graphics Editor	“Optional: Creating alarm graphics” on page 20
3. Operations		“Overview of Security Commander DVR” on page 1
a. View and control digital video system devices	Operations > Video Console	“Using the Video Console” on page 7
b. Monitor badge activity	Operations > Badge Monitor	“Monitoring badge activity” on page 21
c. Monitor alarm activity	Operations > Alarm Monitor	“Monitoring alarm activity” on page 21
d. View alarm graphics	Operations > Alarm Graphics View	“Viewing alarm graphics” on page 21

You will define your CCTV surveillance options using the Operations, Device, and Administration menus and forms within Security Commander.

Perform the steps in the order they appear. Refer to *Security Commander Help* for additional information.

Creating operator records and setting permissions

Operator records

Use the Administration menu, Operator Form to create operator records that allow individuals to access the Security Commander program.

To set up operator records:

1. Select an existing record or click Add to add a new record.
2. Select a Facility from the drop-down list or leave the default, Ignore Facilities, allowing any operator to see this record. Those facilities available for assignment by this operator will appear in the Facility drop-down list.
3. Enter the following:
 - Login ID the operator will use to log in
 - Name of the operator
 - Password the operator will use to log in
 - Click the drop-down list of available permissions. Select the desired permission.
 - Select a language.
4. The Facilities tab of the Operator Form displays the facilities assigned to the current operator. Click Assign Facilities to display a list of the facilities available for assignment to this particular operator. Facilities can be moved to the Assigned list by highlighting and clicking the appropriate arrow. Facilities can be removed from the Assigned list by highlighting and pressing the appropriate arrow.

Setting permissions

Use the Administration menu, Permission, to display the Permission Form to create permission records. The permission records that you create define the actions operators may perform on those forms within Security Commander.

The information on the left side of the form can be viewed one of two ways: Show by Action and Operator. This option is accessed by right-clicking the mouse button while the mouse pointer is under the tab.

- “Show by Action” lists the actions (none, read, update, all) followed by the forms assigned to them. Operator displays the Operator Form, which shows permissions assigned to existing operators.
- “Forms” lists the forms within Security Commander. If a + appears on the left of the form name, then additional items are available. Click the + to the left of the form to display any additional forms. You can also double-click the form menu to view the additional forms.

Four types of actions can be assigned:

- “None” means that no access is given to that form.

- “Read” means that read only access is given. The form and the associated records can be viewed but not modified.
- “Update” means that the records on that form can be viewed and modified.
- “All” means that the records on that form can be viewed, modified and deleted.

Mixed is not an action to be assigned. It is used only on this form to signal that any forms beneath a general title have different actions assigned.

Creating Digital Video Device records

Define and configure your DVR record by selecting Device > CCTV > Digital Video Device. The form opens with the Definition tab displayed.

To define a digital video recorder:

1. Select an existing record or click Add to add a new record by entering a unique name in the Description field.
2. Select a Facility from the drop-down list or leave the default, Ignore Facilities, allowing any operator to see this record. Those facilities available for assignment by this operator will appear in the Facility drop-down list. A facility option can be designated for your DVR.

When you change a facility designation, it changes the facility for the DVR only. You receive a message displaying: Do other devices change to the same facility as the digital video recorder? Select Yes or No. If you select Yes, the alarm record and camera records change as well. You need to verify the accuracy of the revised records.

Definition tab

The Digital Video Device Form contains a Definition tab.

Note: Some options might be unavailable for particular DVR models.

To define your Digital Video Device:

1. Enter a device address, a unique Security Commander logical address associated with this device. This field will not be available for edit on existing records. This number is used in Security Commander software to uniquely identify the DVR and its related records.
2. Click the Device type field and select the appropriate brand from the list. The device type list is populated from the brand-specific plug-in module(s) that are installed.
3. Check the Enabled check box to have Security Commander start a driver for this DVR. Leave unchecked to program the DVR, cameras, and presets before connecting the equipment to the Security Commander system.
4. In the TCP/IP Address field, type the IP address of the DVR.
5. In the Connection Port field, type the IP port number of the DVR.

6. In the Timeout field, type the number of seconds that the video service should wait for an acknowledgement from the DVR before generating an alarm.
7. Click a TCP or UDP button to select the IP protocol required by the DVR.
8. In the User name field, type the name of the DVR user authorised to open a connection to the DVR.
9. In the Password field, type the password required to open a connection to the DVR.
10. In the Other field, type additional parameters as required by the device type. For example, with TruVision DVRs, you must specify the type via the model name (such as "Type=TVR60").
11. When connected to the DVR, click the "Get Cameras From DVR" button when you want to perform a camera discovery. The DVR's cameras will be used to create or update the DVR Camera records.

Configuring cameras

Edit existing camera parameters by selecting Device > CCTV > Camera. The form opens with the Definition tab displayed.

Typically, camera records are created automatically from a connected DVR by clicking the "Get Cameras From DVR" button on the Digital Video Device form - Definition tab.

To configure a camera record:

1. Select an existing record to display the camera in the Description field.
2. If required, select a Facility from the drop-down list or leave the default, Ignore Facilities, allowing any operator to see this record. Those facilities available for assignment by this operator will appear in the Facility drop-down list.

Camera Form Tabs

The Camera Form contains the tabs listed below. Complete each tab in the order they are listed.

Definition Tab

To configure your camera options:

1. The Address of the camera is automatically assigned. The address is a 2-digit number that should correspond to the camera channel on the back of the DVR.
2. The DVR field displays corresponding DVR with which this camera is associated.
3. Select Camera Type as type of camera behaviour, Fixed or PTZ, from the drop-down list.

4. By default, Enable Camera is not selected. The camera can be enabled or disabled for viewing and managing from within Security Commander and setting accessibility from the Video Console. Disabled cameras do not display on the Video Console.
5. Next, select the Presets tab.

Presets Tab

The Presets tab allows you to assign previously defined presets to a camera (presets must first be defined on the Camera Preset Form). Presets can only be assigned to cameras with PTZ having this feature enabled.

To assign presets to a PTZ camera:

1. Click Assign Camera Presets to display the Camera Preset Assignment form. A list of available camera presets displays, enabling you to select and assign or unassign one or more presets for the selected camera.

Result: When the Camera Preset Assignment form closes, the selected presets display in the Assigned Presets list box of the Presets tab window.

2. Click Save to save the selections.

Creating camera presets

Note: This option is available for PTZ cameras only.

Presets are numbers that represent a camera view position stored inside the camera. When activated, Security Commander will send a "call preset" command to the DVR/camera for the selected preset number. After setup and programming of your DVR devices to meet your monitoring requirements, you'll need to parallel the settings and positions in the Security Commander configurations. Presets must be defined before you can assign them to a camera on the Presets tab of the Camera Form.

To create preset records:

1. Click Administration > Camera Preset. The form opens with the Definition tab displayed.
2. Select an existing record or click Add to enter a new record with a unique name in the Description field, describing or numbering a preset camera position.

Note: Presets are registered positions of camera views represented by a number. Hence, different cameras may use the same preset number.

3. Select a Facility from the drop-down list or leave the default, Ignore Facilities, allowing any operator to see this record. Those facilities available for assignment by this operator will appear in the Facility drop-down list.
4. In the Preset field, enter a number within the range of 1 to 32. This number will only reference the preset number programmed and stored in a camera with PTZ capability.

5. Click Save.

Result: The preset can now be assigned to cameras.

Mapping video footage to alarms and events

When you select Administration > Event Trigger, the form opens with the Preset/Camera tab displayed. Use this form to create triggers by defining the logical rules that will initiate event-driven video response.

To set up event triggers:

1. Select an existing record to edit or click Add to add a new record by entering text up to 64 alphanumeric characters in length, in the Description field. The description should convey specific information relating to a physical location, camera, reader, or state, for example:

Front Door Inv Badge Camera 1 Reader 1

You can assign a reader alarm or camera alarm or both and this can be reflected in the description of the Trigger. You will be required to complete all tabs before you are able to Save your entries and selections on this form.

Event Trigger Form Tabs

The Event Trigger Form contains the tabs listed below.

Preset/Camera Tab

You have three options on the Preset Camera tab:

- Edit: Click to display the Preset/Camera Selection window. You are able to edit an existing Preset and Camera combination associated with this Event. This option is disabled if there are no existing records.
- Add: Click to select a camera and corresponding preset. The available presets for a camera display after you select the camera. Click OK. The addition now displays in the Assigned Preset/Camera box.
- Remove: Select and click to remove a Preset and Camera combination from the list of available combinations in the Assigned Preset/Camera box. This option is disabled if there are no existing records.

RAS/Door Tab

Select the RAS or Door and transaction types that will become the source for initiating the Event Trigger.

To assign a Door or RAS to an event trigger:

1. Click Assign Door or RAS to display a Door/RAS Assignment window, enabling you to select and assign a Door or RAS to this Event Trigger. The list displays Door or RAS assigned to this Event Trigger record.
2. In the Transactions section, select any or all of the options as types of Door or RAS transactions to trigger an event.

- Valid
 - Invalid
 - Unknown
 - Lost
 - Unlock
 - Lock
 - Open
 - Close
 - Trace
3. In the Tag Selection section, select one of the Tag options.
 - None: No tag is sent to the DVR for marking recorded video or manipulating record rate.
 - Tag only: A tag is sent to the DVR for marking recorded video at the cameras current record rate.
 - Tag as event: A tag is sent to the DVR for marking recorded video and for changing the cameras record rate to its event record rate settings.

Alarms Tab

This tab allows you to select alarms and alarm transaction types that will become the source for this Event Trigger.

To assign alarms to an event trigger:

1. Click Assign Alarms to display an Alarm Assignment window, enabling you to select and assign an alarm record for this Event Trigger record.
2. Click OK.

Result: The alarms now display in the Assigned Alarms windowpane.

3. Select any or all of the options as types of alarm transactions to trigger an event: Alarm or Reset.
4. Select one of the Tag Selection options.
 - None: No tag is sent to the DVR for marking recorded video or manipulating record rate.
 - Tag only: A tag is sent to the DVR for marking recorded video at the cameras current record rate.
 - Tag as event: A tag is sent to the DVR for marking recorded video and for changing the cameras record rate to its event record rate settings.
5. Click Save to save the selections.

Optional: Creating alarm graphics

You can create a graphical view of alarm states for the alarms you selected. Select Operations > Alarm Graphics Editor to display the Alarm Graphics Editor Form.

Drag the required camera from the device list onto the map and drop it at the location.

Refer to *Security Commander Help* to assist you in completing the details of specific options on this form.

Monitoring badge activity

The Badge Monitor displays badge activity on the system's door/arming stations. To open the Badge Monitor Form, click Operations > Badge Monitor.

Before the Badge Monitor can display badge activity for a door/arming station, the door/arming stations MUST be marked as Active and Online and the activity for the door/arming station MUST be routed to the Badge Monitor. By default, routing for all transactions is set to the Badge Monitor.

Badge activity designated with a camera graphic indicates association with a live camera and a DVR recording.

Refer to *Security Commander Administration Manual and Operation Guide* and *Security Commander Help* for details of monitoring badge activity.

Monitoring alarm activity

The Alarm Monitor displays alarm (input) activity. An alarm is displayed on the Alarm Monitor if the Monitor field was selected in the Alarm Form.

All acknowledgments are recorded in both Operator and the Alarm History. In addition, all responses are recorded when the alarm is acknowledged.

There are three sections to this form. The top section or pane lists the alarms. The second pane lists any messages assigned to the current (highlighted) alarm. The third pane allows you to respond to an alarm by either selecting a predefined response or entering your own.

Not all options will be available to you. You must click on an alarm activity with a DVR association in order to enable video options on the shortcut menu.

Use the Alarm Monitor Form toolbar to remove alarms from the display.

Refer to *Security Commander Administration Manual and Operation Guide* and *Security Commander Help* system for details of monitoring badge activity.

Viewing alarm graphics

When configuring your alarms, you created a graphical view of alarm states for the alarms you select. In order to view a selected alarm graphics map, click Operations > Alarm Graphics Viewer.

To view the map, select the appropriate map from the drop-down list. Selecting a camera point on the alarm graphics viewer will display a live camera video window for that camera.

Right-click to display the shortcut menu, enabling you to navigate between the Alarm Monitor Form and Alarm Graphics Viewer Form.